

# PBCH Newsletter April, 2019

Page 1

Issue No. 4

Tails and Trails  
Happy Easter!



## A message from President Karen Kimball

BCH of Washington puts on a Leave-No-Trace Trainer class every spring. It is very well done and is similar to the Master Trainer class in California. It is in Twisp, Washington on May 3-5. Need to arrive by evening of May 2. Sleep in own camper or tent, no stock needed. They furnish all meals. Cost is \$100 which covers all meals for Friday, Saturday and Sunday. PBCH member needed to attend so information can be brought back and taught to our members.

Please let me know and the chapter may be able to help with expenses. We will be working on trails to ride and work parties and other events for this year so bring any suggestions to the next couple of meetings.

## Information Corner

**Newsletter Editor Joni Lueck**

Email [jklhorserider@gmail.com](mailto:jklhorserider@gmail.com)

Please go to [www.pbch.org](http://www.pbch.org) and print out 2019 **membership form** and mail in. Please email Susan Purdy, treasurer [finegansfarm2@gmail.com](mailto:finegansfarm2@gmail.com) with questions. You can also sign up at any ride or event throughout the year! Mail to PBCH, P.O. Box 1903, Hayden, ID 83835. Please send in membership dues!

## Calendar of Events

**April 17, third Wednesday, monthly PBCH meeting.** 6360 4<sup>th</sup> St., Dalton Gardens City Hall. Socialize at 6:30. Meeting starts at 7 p.m.

**April Ride and campout Escure Ranch, April 27-29.** Will pair with Washington BCH chapter Ponderosa. Ride located in Washington. Three hours from Coeur d'Alene. See driving instructions on [www.pbch.org](http://www.pbch.org) under maps. For information Karen Kimball. 208-772-2434. Ride Saturday at 9:30. Beautiful area. Plenty of parking. Camp or just come for the day. Ponderosa BCH contact Ken Carmichael email [kcarmichael2225@gmail.com](mailto:kcarmichael2225@gmail.com)

**Saturday, May 11.** Marie Creek work party. Trail boss Karen and Jim Kimball. 208-772-2434. See driving instructions on [www.pbch.org](http://www.pbch.org) under maps.

**May 15 meeting. Third Wednesday. Trailmeister Robert Eversole will speak at 6:30 on "Sharpening the Back Country Brain."** Monthly business meeting after his speech. 6360 4<sup>th</sup> St., Dalton Gardens City Hall. Bring a friend. Robert is a national speaker.

**Saturday, May 18.** Heyburn State Park work party on north side. Jerry Shriner trail boss. Email [jerryshriner@gmail.com](mailto:jerryshriner@gmail.com)

**To operate chainsaws on the work parties you must be certified. The chapter is planning a chainsaw certification class soon.**

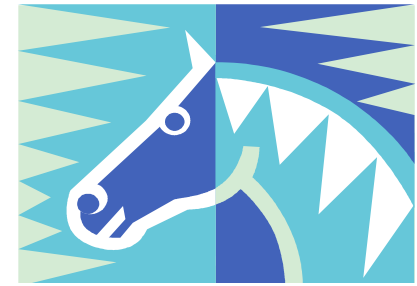
**Continued Calendar of Events page 4**

# PBCH Newsletter April, 2019

Page 2

Issue No. 2

Tails and Trails  
Support our sponsors



## **Upcoming events For 2019 - Dates TBA**

Work party Chilco Mtn.  
Work party Marie Creek  
Work party Farragut  
State Park

## **Campout Trips**

Asotin, WA Memorial Day Weekend  
Farragut State Park/Potluck/Camp  
Riverside State Park  
Heyburn State Park

## **Rides w/other BCH chapters**

Escure Ranch, WA -  
Missoula, MT chapter fun ride-

---

If you are interested in  
trail bossing any ride  
or event please email  
Trails coordinator Jill Graham  
or attend a monthly  
Business meeting.

See Trail Boss worksheet  
On web [www.pbch.org](http://www.pbch.org)

## **Some ideas for upcoming fun rides this riding season**

### **Nearby In Idaho**

Blue Creek Bay  
4<sup>th</sup> of July Recreation Area  
Farragut State Park  
English Point  
Heyburn State Park  
Bernard Peak  
Marie Creek  
Canfield Mountain  
Chilco Mountain  
Red Ives Ranger Station  
Lookout Pass  
Pee Wee Creek  
McCroskey Park

### **Nearby In Washington**

Antoine Peak  
Liberty Lake Horse Park  
Mt. Spokane State Park  
Escure Ranch and Fish Trap  
McKenzie Conservation Area  
Riverside State Park  
Fishtrap Recreation Area  
Columbia Plateau Trail State Park  
Slavin Conservation Area  
Palisades City Park

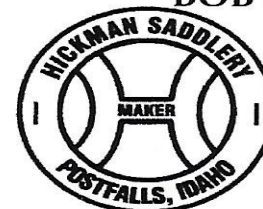


### **COREY DWINELL, LUTCF**

*Insurance and Financial Services Agent*

841 N BOULDER CT #A  
POST FALLS, ID 83854  
Tel 208.773.3820  
Fax 208.457.1594      Licensed in ID & WA  
[cdwinell@farmersagent.com](mailto:cdwinell@farmersagent.com)

Registered Representative, Farmers Financial Solutions, LLC  
30801 Agoura Road, Bldg. 1, Agoura Hills, CA 91301-2054  
Tel 818.584.0200      Member FINRA & SIPC



### **BOB & TARA HICKMAN**

**Saddlemaker**

Cable Rigged Saddles  
Custom Saddles  
Pack Equipment  
Suspenders  
Custom Chaps  
3960 West 5th Ave. B-3  
Post Falls, ID 83854  
tel. (208) 773-9367  
1-888-397-2022

[bob@hickmansaddlery.net](mailto:bob@hickmansaddlery.net)

[www.hickmansaddlery.net](http://www.hickmansaddlery.net)

# PBCH Newsletter April, 2019

Page 3

Issue 4

Tails and trails

Support our sponsors



(208) 765-8228 • Spokane Toll Free 624-6591  
470 Kathleen Avenue • Coeur d'Alene, ID 83815  
[www.parkertoyota.com](http://www.parkertoyota.com)



Bob Peters, DVM

(509) 928-MPEH  
[www.mckinlaypetersequine.com](http://www.mckinlaypetersequine.com)



Jamie Duman, CPA

e-mail: [jamie@jamiedumancpa.com](mailto:jamie@jamiedumancpa.com)

8245 N. Cornerstone  
Hayden, ID 83835

Phone (208) 762-5728  
Fax (208) 762-9438



April M. Linscott  
Attorney

208 762-0203  
208 762-0303 fax  
[alinscott@omllaw.com](mailto:alinscott@omllaw.com)



8596 N. Wayne Drive, Suite A  
Hayden, Idaho 83835

DAVE LOGUE  
President



FAA Repair Station #LOGR640X

Specializing In Fiberglass Aircraft Parts

email: [selkirkav@selkirk-aviation.com](mailto:selkirkav@selkirk-aviation.com)  
[www.selkirk-aviation.com](http://www.selkirk-aviation.com)

(208) 664-9589  
Voice Mail 1-800-891-7687

3377 W. Industrial Loop  
Coeur d'Alene, ID 83815

JONI LUECK  
Vice-President

## 2019 PBCH Officers and board members:

Karen Kimball, president  
772-2434;

Arnie Wilkens,  
vice-pres. 755-2193;

Julie Volpi, secretary  
805-674-6807 ;

and Susan Purdy, treasurer,  
772-4210.

Board members: Bob Funke  
660-7919;

Bill Clarke 687-1968;

Ray Heilman 660-2907; and  
Jill Graham, 660-5549.

Jerry Shriner, public lands  
coordinator.

Joni Lueck, newsletter editor,  
659-9066.

Jill Graham, trail committee  
chair email

[kooy04@gmail.com](mailto:kooy04@gmail.com)

Your business card could go here each month for \$30 for non-members and \$10 for members. Now this is a yearly price; not a monthly price. What a great deal! Also the business card is put on the website [www.pbch.org](http://www.pbch.org) This is a fundraiser for the chapter!

# PBCH Newsletter April, 2019

Page 4

Issue 4

Tails and trails  
Happy Easter!



Calendar continued from page 1

**Memorial Day Weekend, May 24-27**, Asotin, WA annual campout and ride. Trail bosses Jim and Karen Kimball. Call 208-772-2434. See driving instructions on [www.pbch.org](http://www.pbch.org) under maps.

**Saturday, June 1. Work party, fun ride, and campout.** Farragut State Park horse camping area. **Pending approval** of work party with local ranger. Several corrals available for overnight horse camping. Make camping reservations through the park. Contact Julie Volpi, trail boss. Email [Charlieandjulie01@gmail.com](mailto:Charlieandjulie01@gmail.com)

**Saturday, June 22.** Work party Chilco Mountain. Trail boss Karen Kimball. 208-772-2434. 14-mile loop. Driving instructions on [www.pbch.org](http://www.pbch.org) Please RSVP.

**July** Third annual Fun ride and potluck, Antoine Peak, WA. Trail boss Bev Syslo. Driving instructions on [www.pbch.org](http://www.pbch.org)

**July** Myrna McMain campout and ride south of CDA.

**September 7** Service Project. Help with Dalton Gardens annual picnic. Trail boss Karen Kimball.

**September 22** Fun ride Bernard Peak. Trail boss Julie Volpi email [charlieandjulie01@gmail.com](mailto:charlieandjulie01@gmail.com)

## Other rides and events

**May 4-5. Mission Mountain BCH of Montana.** Steak ride near St. Ignatius, MT. Call Laura Nelson, 406-599-8809 to purchase your ticket.

**Thursday, June 13. Fun ride** with Missoula BCH of Montana. If interested please call Joni Lueck 208-659-9066 for details.

**Saturday, May 25** starts at 9 a.m. Selkirk Valley Back Country Horseman second annual Wild West Bingo Ride and Cowboy Cookout 2019, Farragut State Park horse corral area. More information see [www.svbch.org](http://www.svbch.org) Please sign up.

## March Meeting Minutes

Meeting was called to order at 7:00 p.m.

Pledge of Allegiance

1 guest in attendance, Cheri King

Minutes from February were discussed and correction made. Calendars were sold only at Tractor Supply. After correction, motion made by Bill Clarke to accept and 2nd by Marian Crumb. Motion passed by membership.

Review of books: review has not been completed. Will table until new treasurer Bea Christopherson is well.

State Board of Directors and Convention: Karen reported on convention. There were 5 resolutions to vote on at convention. 1. Use of M.R.A.'s in the wilderness. 2. BCHA number of voting directors. 3. Protect the principal and spent gains and interest from BCHA Legacy Fund. 4. Provide 10% rebate to chapters for the calendars they sell. 5. Chainsaw certification programs to BCHI members.

Items from State Board of Directors minutes in September: BCH members from other states chapters not covered under Idaho's insurance. Members from other chapters within Idaho are covered. If you are on Facebook page, must state members only if BCH ride that is not insured.

Forest Service: Forest Service to hold First Aid Class. FS to provide chapter with 6 helmets approved for chainsaw work. We are still waiting for \$900 payment for work done in 2018.

BCHI and BCHA websites: Karen encouraged members to check out websites and go to the education tab. The websites have LNT video and other information.

Trail Rides and Trail work Parties:

\*Escure Ranch camp out and ride: April 27th-29th ride at 9:30 am on Saturday.

\*Marie Creek Clearing: May 11th

\*Heyburn north side clearing: May 18th

\*Asotin Creek campout: May 24th\_27th

\*Farragut work day: June 1st

\*Chilco Mountain trail clearing: June 22nd

\*Myrna McMain campout: July or September

\*4th of July trail project: TBA

\*Dalton Gardens Picnic: September 7<sup>th</sup>

Minutes continued on page 6



Minutes continued from page 6

Ride in Missoula: Joni Lueck reported on upcoming events from Missoula BCH chapter in Missoula, MT Ride Thursday, June 13. Also a Steak ride in St. Ignatius with Mission Mountain chapter of MT.

Trail Bosses needed: Julie Volpi to lead Bernard ride. Bev Syslo suggested to lead Antoine Peak ride.

Trail Meister to be speaker at May meeting. Robert is partnering with BCHA.

Starting in April meeting to be held on third Wednesdays thru September.

Treasurer's report: Income: dues \$100. Expenses \$320 check to Karen Kimball for t-shirts and Banamine. Progressive Pot \$146. Kris Pettibone's name was drawn for Progressive Pot but she wasn't at the meeting so the pot will roll over to next meeting.

Meeting adjourned 8:00 pm

**Power Point Presentation was after the meeting. Member Susan Walker and her friend Cheri King had a video presentation on their participation in evacuating animals from the Paradise Fire last summer in California. They also talked about the formation of the H.E.A.R.T. Organization for the emergency evacuations of animals.**

---

## **Five resolutions at the BCHI State Convention - All passed.**

There were 5 resolutions to vote on at state convention. All five passed at the board meeting. Resolutions as follows:

1. Use of M.R.A.'s in the wilderness. The MRA process is a tool that forest managers use that allows the use of modern tools to be used in extraordinary circumstances in the care and maintenance of wilderness.
2. BCHA number of voting directors. Amended so that each state is entitled to one voting director at the BCHA Nat'l board meeting.
3. Protect the principal and spent gains and interest from BCHA Legacy Fund.
4. Provide 10% rebate to chapters for the calendars they sell. Last year we sold 150 of the 2019 calendars at \$20.00 each. The chapter did receive its rebate check of \$300.
5. Chainsaw certification programs to BCHI members.

## Panning for Gold



This metal structure was seen recently in the desert near Borrego Springs, CA. A gold miner and his pack animal. Look at the detail in the frying pan, coffee cup, packs and bed roll. The flower bloom was extraordinary in that area this spring. Photo by Joni Lueck.

